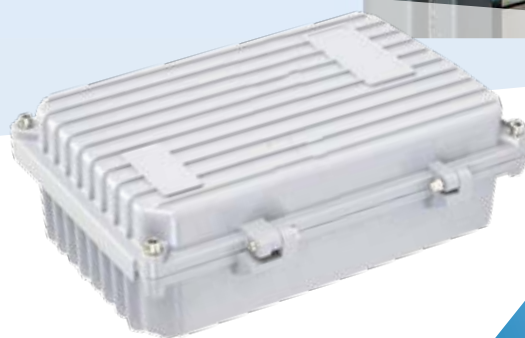




# E55 SERIES

## INDUSTRIAL IP30/65 GIGA POE+ SWITCHES



Ethernet  
Surge  
Protection



AC Power  
Surge  
Protection



IP67



IK 10



-40~60°C



30/60W  
PoE



Full Ports  
Gigabit



Fiber-Optical

E55 industrial unmanaged GbE PoE+ switch is a plug & play Ethernet switch offering easy way to make the transition to Gigabit Ethernet and increase the speed of your network connection. The switches are robust, energy efficient and rigorously tested, thereby providing the reliability that industrial installations require.

E55 delivers 8 (10M/100M/1G) RJ45 with 8 PoE+ (Support 802.3 at/af, and total up to 240W) ports and 2 GbE SFP ports. E55 offers users with various options of port combinations and PoE+ budget in order to meet a wide range of requirements in various applications.

E55 is available in IP30 or IP65 enclosures with optional power supply and battery backup. Please see below 6 available IP65 Models.

Benefits:

- Slim type industrial switch
- IEEE 802.3af/at Power over Ethernet
- IEEE 802.3az Energy Efficient Ethernet standard for green Ethernet application
- Low Total Cost of Ownership (TCO) with Energy-efficient Design

The switch is designed to help companies to conserve power and reduce TCO by Energy Efficient Ethernet (IEEE 802.3az). It can be used for customers to build a green Ethernet networking environment.

## ADVANCED POWER

[WWW.ELECTRIC-FUEL.COM](http://WWW.ELECTRIC-FUEL.COM)

## SPECIFICATION

### Port Configuration

Total Ports	RJ45 (10M/100M/1G)	Uplinks (100M/1G)	Console
10	8	2 SFP	-

### Hardware Performance

Forwarding Capacity (Mpps)	Switching Capacity (Gbps)	Mac Table (K)	Jumbo Frames (Bytes)
14.88	20	8	9216

### Environmental Range

Operating Temperature		Storage Temperature		Operating Humidity	Altitude	
Fahrenheit	Centigrade	Fahrenheit	Centigrade	5% to 95% non-condensing	Feet	Meters
-40 to 167	-40 to 75	-40 to 185	-40 to 85		< 10000	<3000

### Dimension, Weights, Mounting

Dimension (WxHxD)		Weight		Mounting Type
Millimeter	Inches	Kilograms	Pounds	DIN rail, Wall
44x 135x 130	2.4x 5.3x 5.1	< 1	<2.2	

### Voltage and Frequency

#### Primary Power Supply - DC Input Voltage

DC Nominal	48 VDC dual inputs - 12/24/48 VDC for PoE mode (by request)
DC Operating Range	48 to 57 VDC for PoE function and 51 to 57 VDC for PoE AT mode

### PoE Power Capacity

Available PoE Power	Number of Ports That Support PoE (15.4W), PoE+ (30.0W), or UPoE(60W)
240W	Each of port 1 – 8 support PoE/ PoE+ within available PoE Power

### Certifications

#### Regulatory Compliance

EMS	EN61000-4-2 ESD, EN61000-4-3 RS, EN61000-4-4 EFT, EN61000-4-5 for RJ45 Port,(Surge 6KV), EN61000-4-6 CS, EN61000-4-8 PFMF, (EN61000-6-2 by request)
EMI	FCC Part 15 Class A (EN61000-3-2, EN61000-3-3, EN61000-6-4, EN55022, EN55011 by request)
Safety	CE, (EN60950 by request)


#### Mechanical Stability

Vibration	IEC 60068-2-6
Shock	IEC 60068-2-27
Freefall	IEC 60068-2-32

#### Approvals (by request)

Railway Norm	EN50121-4, EN50155
Transportation	NEMA TS2
Substation	IEC61850-3, IEEE1613

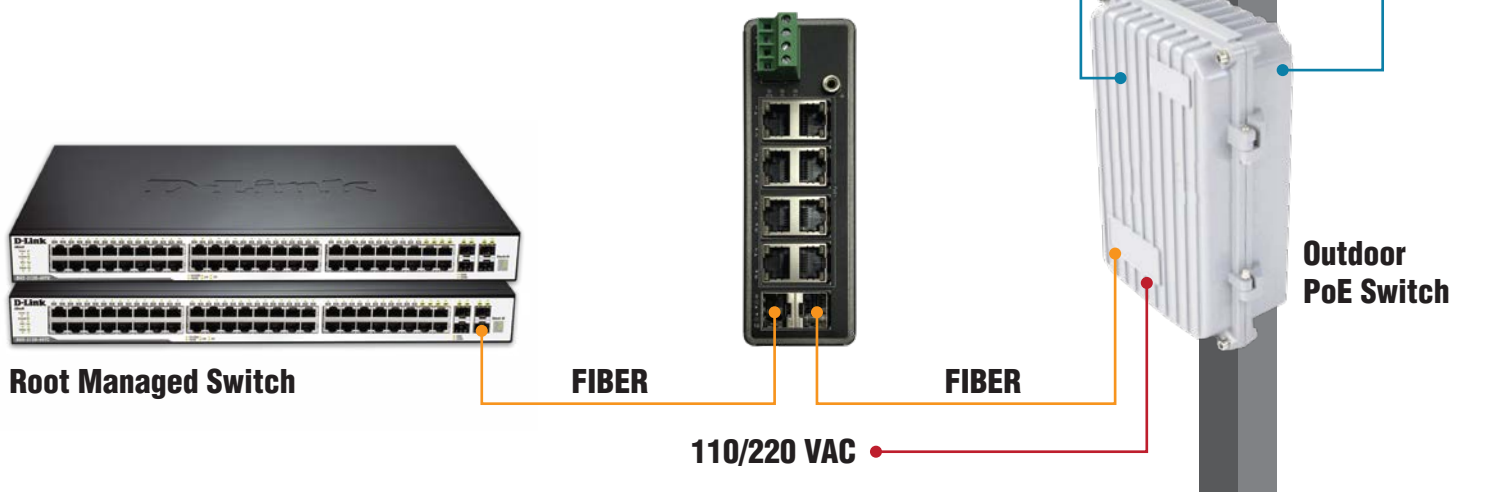
## OUTDOOR SWITCH - CABINETS ENCLOSURES & ACCESSORIES

Surveillance & Industrial Cabinets			Telecom Fiberglass & cast Aluminum enclosures		
E26-229	E26-221	E26-213	E26-204	E26-100	E26-11A
					
Fiberglass IP65 <b>80x60x30cm</b> Cabinet	Fiberglass IP65 <b>65x50x25cm</b> Cabinet	Fiberglass IP65 <b>50x40x20cm</b> Cabinet	Fiberglass IP65 <b>35x30x15cm</b> Cabinet	Fiberglass IP67 <b>30x20x10cm</b> Enclosure	Cast Aluminium IP67 <b>35x22x10cm</b> Cabinet

### OPTIONAL ACCESSORIES

IP65 Li P.S Charger	DC to AC inverter	Sola Controller	Lithium Batteries
			
100, 240, 320, 450, 600W Outdoor IP65/67 -40°C - +75°C	100, 240, 350, 500W Outdoor -40°C - +60°C	300, 600, 1000, 1500W PWM / MPPT controllers 12/24/48V Output for Lithium Battery	Epsilon Batteries are built from blocks of 2.5ah and 32ah that can be connected in parallel for higher capacity

### E55 APPLICATION SCHEME



HOW CAN WE HELP YOU? CONTACT ELECTRIC FUEL AT:

Western Industrial Park  
1 HaSollela St.  
Bet-Shemesh, 9905415, Israel

Tel: +972 29906664

www.electric-fuel.com  
outdoorsys@electric-fuel.com