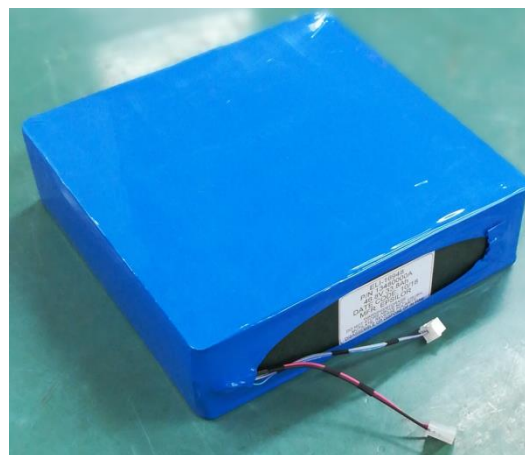


# ELI-16948 backup battery

Rechargeable Li-ion Battery Pack - BBU with internal UPS controller

- High energy density
- SMBus battery communication technology
- Smart circuit providing remaining capacity, number of cycles and health status
- Low energy consumption during storage



## Applications

HLS, Surveillance Camera, Telecom Radio and more

## Charge Method (CCCV)

- Charging through a desktop or tactical charger or through a dedicated charging board installed in host device
- Typical Charging Voltage: 52V
- Typical charging current: 5A

## Safety

- Under/over voltage
- Under/over current
- Short circuit
- Temperature

## Quality System

- ISO-9001:2008
- AS9100

## Standards

- UN38.3
- UL-1642 (for cells)

## MSDS and Disposal

- Check with manufacturer

## Electrical

Capacity (typical)	32.5Ah @ 5A & RT
Energy	1,521Wh
Max. voltage	54.6V
Nom. voltage	46.8V
Min. voltage	32.5V
Max. Dis. Current (cont.)	5A
Communication	SMBus Optional: Ethernet
Life Cycle	1,500 cycles to 80% of initial capacity @ 80% DOD 4,000 cycles to 80% of initial capacity @ 60% DOD

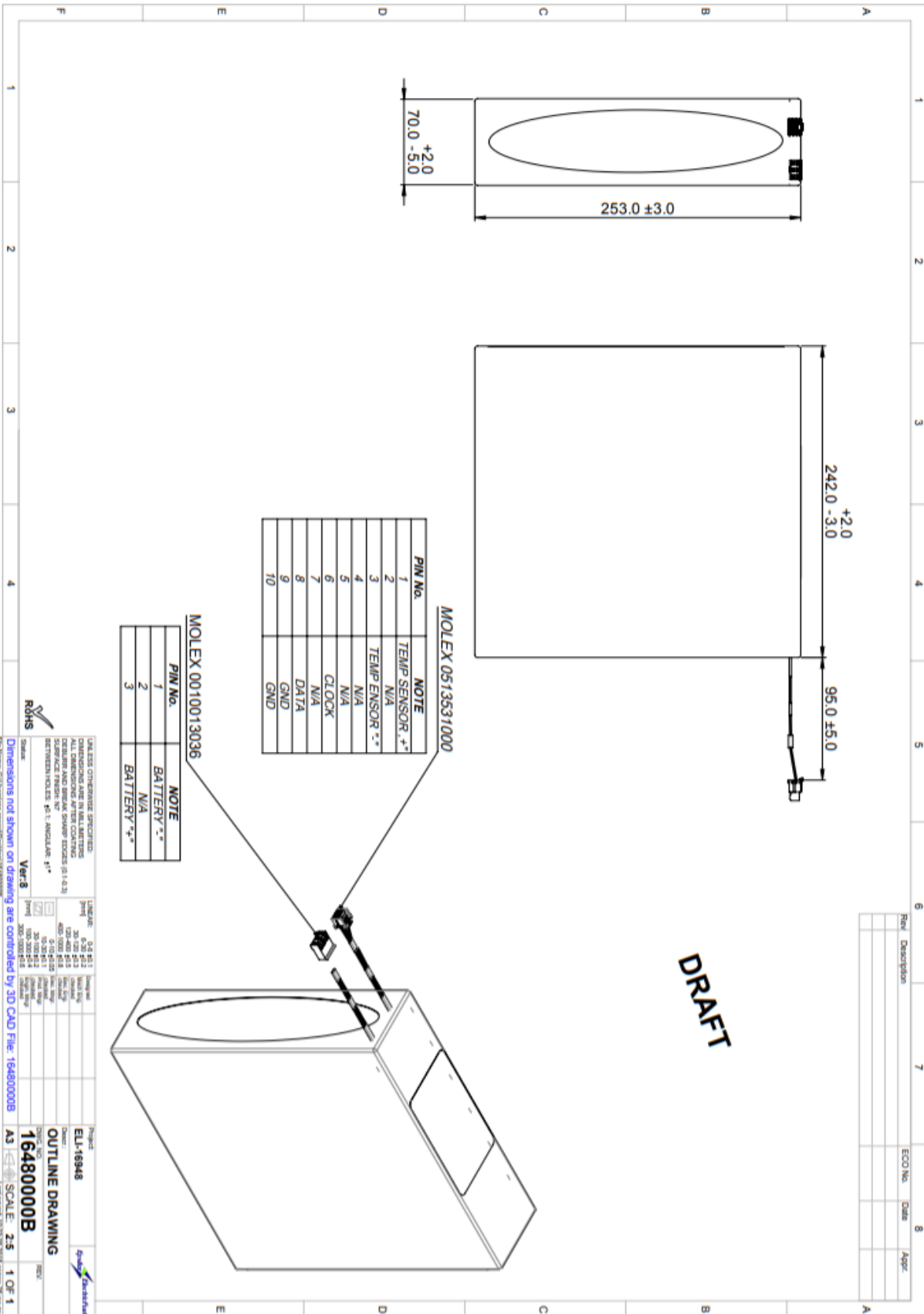
## Mechanical

Dimensions	(L;W;H) 244mm X 72mm X 256mm
Weight	8.7 gr
Energy Density	174Wh/kg; 345Wh/l
Battery Housing	Tubing shrink
Color	Blue

## Environmental

Charge*	0°C to 45°C
Discharge*	0°C to 60°C
Storage:	
More than One year	-20°C to 25°C
Up to 3 months	-20°C to 45°C
Up to one month	-20°C to 60°C
Humidity	0 to 90%
Transportation	Class 9

\*Optional: Heating mechanism for operation at -40°C to 50°C



UNLESS OTHERWISE SPECIFIED:  
 DIMENSIONS ARE IN MILLIMETERS  
 DIMENSIONS NOT SHOWN ON DRAWING ARE CONTROLLED BY 3D CAD FILE: 16480000B  
 ALL DIMENSIONS ARE TO CENTER UNLESS OTHERWISE SPECIFIED  
 DIMENSIONS BETWEEN HOLES: 0° ± ANGULAR: ±1°

Project: ELL-16948  
 Date: 10/23/2018  
 Scale: 2.5  
 1 OF 1

Rev	Description	ECD No.	Date	Appr.